



SELECT™

Simple, Durable Door System



RELIABLE, DURABLE AND A BONA FIDE WORKHORSE

The SELECT™ door system is engineered with superior energy-efficiency and offers an attractive low maintenance design for the energy-conscious retailer. Increase product visibility and boost sales with a system that provides trouble-free performance for years to come. The SELECT™ door system is equipped with led lighting, high impact metal handles, dual seal insulated glass and many more attractive features.

WARRANTY



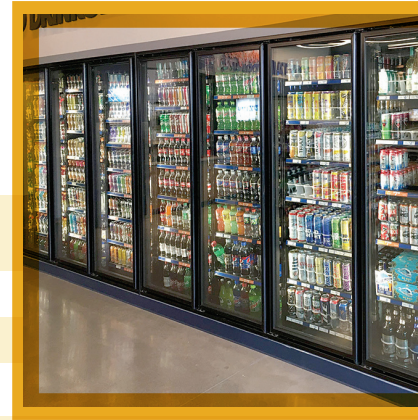
 **10 Year** Sealed Glass Unit  **5 Year** LED  **1 Year** Workmanship and Labor

SELECT™

Simple, Durable Door System



SCAN CODE
FOR MORE INFO



SPECIFICATIONS

Door Sizes (Custom Sizes Available)	24" 26" 28" 30" Width
	67" 75" 79" Height
Shelving* (Standard Black and White)	24" 26" 28" 30" 48" 52" 56" 60"
Deep Shelving	24" 27" 36" 43"
Optional Shelving	Gravity Flow Flex Carts
Performance:	Normal Temp - 75F/60% Low Temp - 75F/65% High Humidity - 75F/65% 3-Pane

LIGHTING SPECIFICATIONS

	EcoLED2	EnVision2	EnVisionFD
Electrical	24V	24V	24V
Color Temperature (CCT)	4000K	3500K/4000K	3500K/4000K/5000K
Lumen Maintenance	L70-180,000hrs L90-54,000hrs	L70 178,000hrs L90-54,000hrs	L70 180,000hrs L90-54,000hrs
Lengths/Wattage	60" - 9.5W	60" - C 10W - L/R 5W	60" - 19.5W 66" - 21.5W
	70" - 11W	70" - C 12.5W - L/R 6W	70" - 23.5W
Light Performance	Efficacy	130 lm/W	110 lm/W
	CRI	84	95
	Lumens	60" - 1235 70" - 1430	60" - C 1100 - L/R 550 70" - C 1375 - L/R 660
Certification	UL, UL2108, CE, DLC 5.1 listed, ANSI 2/NSF, EN60335-2-24		
	IP54, IK08	IP64, IK10	IP54, IK08

FEATURES

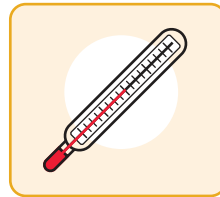
Fully compliant with DOE 2017 regulations



HOLD OPEN



TORQUE MASTER



MED/LOW TEMP DOORS

STANDARD LED LIGHTING

- STANDARD OR FULL-LENGTH HANDLE AVAILABLE
- HIGH-PERFORMANCE 2-PANE GLASS
- MAGNETIC GASKET
- FIELD REVERSIBLE
- STANDARD OR FRENCH SWING CONFIGURATION
- 90 DEGREE HOLD OPEN
- TORQUE MASTER TENSION ADJUSTMENT
- DUAL SEAL INSULATED GLASS
- ENERGY CONTROLLER
- MATCHING PASS-THRU DOOR AVAILABLE

AVAILABLE OPTIONS



FLEX CARTS



GRAVITY FLOW SHELVING



ENVISION™ 2

ENVISION™ 2 LIGHTING

- ENERGY FREE FRAME
- DUAL, AFTERMARKET AND CYLINDER LOCKS AVAILABLE
- FINISHES: BLACK | SILVER SATIN
- HORIZONTAL LED LIGHTING (FRENCH DOOR ONLY)
- GRAVITY FLOW SHELVING
- DOUBLE-WIDE SHELVING FOR FRENCH DOORS
- 3-PANE GLASS
- FLEX CARTS

GET IN TOUCH! Please call or contact our sales department today.

180 Arboit Street, L'Assomption, Quebec J5W 4P5 | energydoorco.com | 844 433 0332 | sales@energydoorco.com